

RETAIL SHOP TO LET

7 CLUB ROW

LONDON E2



THE PROPERTY IS LOCATED IN THE STYLE HEART OF SHOREDITCH ON CLUB ROW, JUST OFF REDCHURCH STREET.

THE UNIT SITS OPPOSITE BARBER & PARLOUR AND THE ELECTRIC CINEMA, WITH NEARBY NOTABLE OCCUPIERS INCLUDING BROWNS EAST, APC, AESOP, FOLK, LE LABO, NUDIE JEANS, AND CLUB MONACO, TOGETHER WITH COFFEE SPECIALIST ALLPRESS JUST ROUND THE CORNER.



SHACKLETON

7 CLUB ROW, SHOREDITCH, LONDON E2

FINER DETAILS

Ground Floor:	610 sq.ft	56.69 sq.m
Basement:	543 sq.ft	50.46 sq.m
TOTAL:	1,153 sq.ft	107.16 sq.m

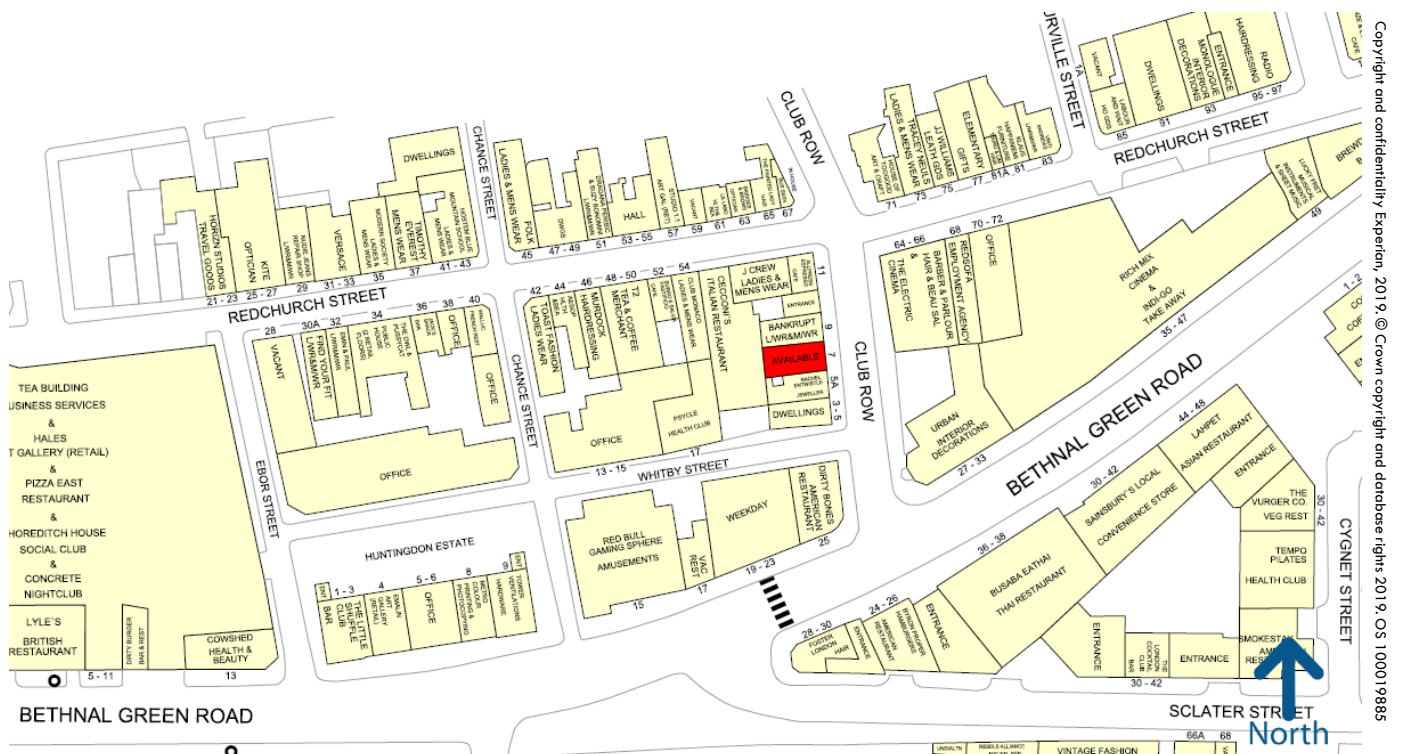
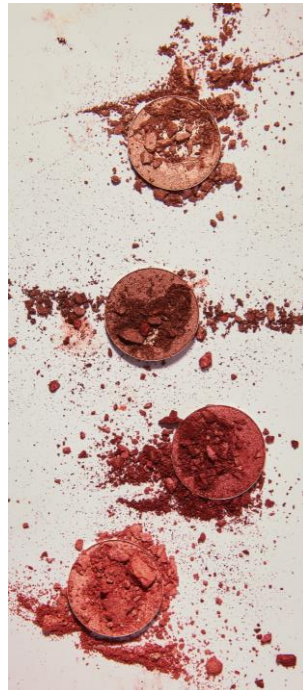
Rent: **£70,000**

Term: Available by way of a new lease, held outside the Landlord & Tenant Act 1954, for a term to be agreed.

Rateable Value: **£28,250**

Rates Payable: **£13,870 per annum (2019/2020)**

An EPC has been commissioned and is available on request.



Copyright and confidentiality Experton, 2019. © Crown copyright and database rights 2019. OS 100019885

FOR VIEWINGS AND FURTHER INFORMATION, PLEASE CONTACT US OR OUR JOINT AGENT KLM RETAIL: 020 7317 3700

ROB FAY

+44 0207 183 8573
Rob.fay@shackletonproperty.com



RYAN MAK

+44 0207 183 8575
Ryan.mak@shackletonproperty.com

Important Notice: These particulars are believed to be correct but their accuracy is not guaranteed and they do not form part of any contract. All prices/rents are quoted exclusive of any VAT which may be payable.