



NEW BUILD UNIT – USE CLASS E – NEW LEASE

# 10 LYELL STREET, LONDON CITY ISLAND

CANNING TOWN, LONDON

936 SQFT.

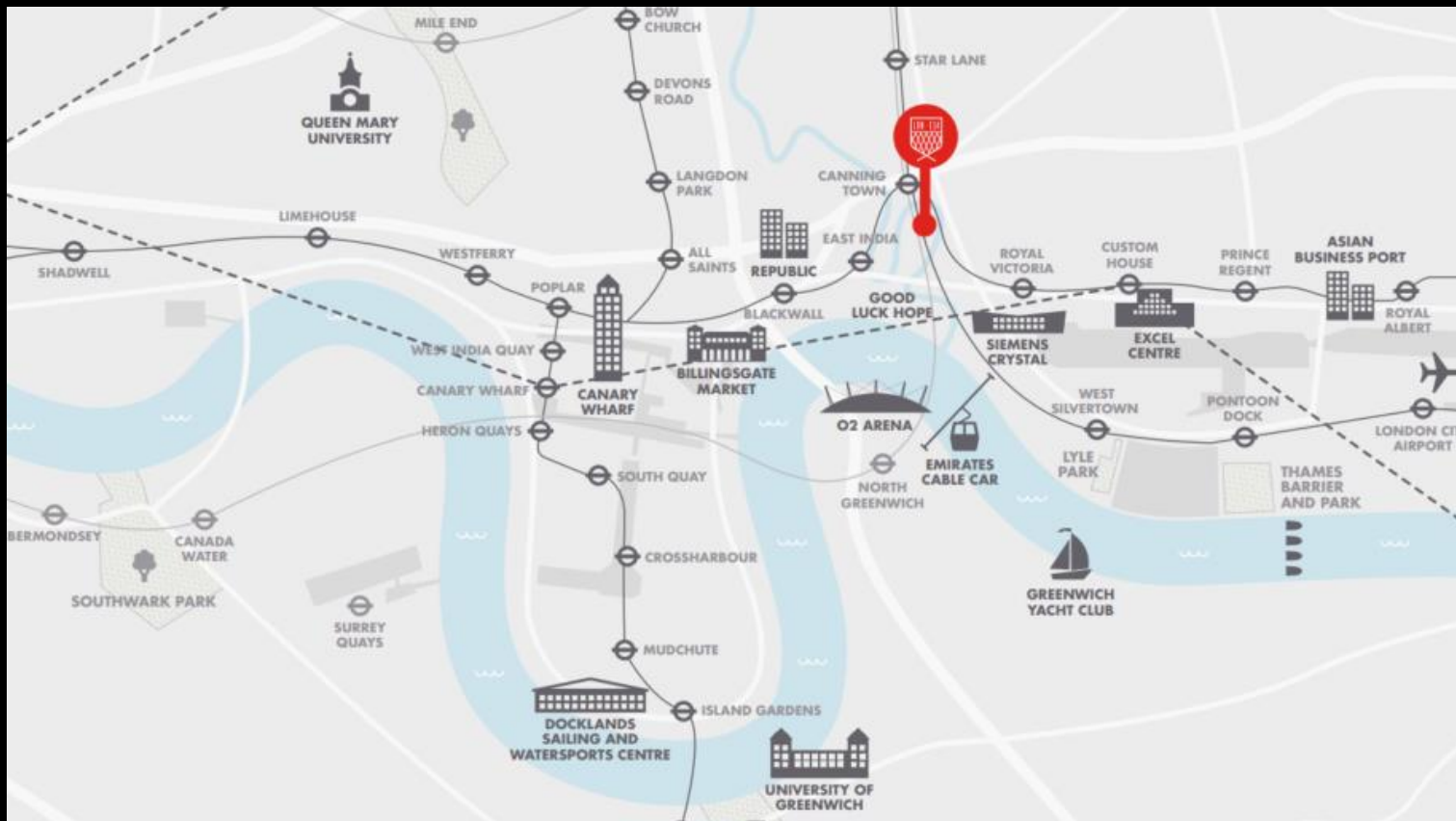
POTENTIAL USES: RETAIL, SHOWROOM, OFFICES, WORKSPACE



RETAIL | RESTAURANT | LEISURE

# WHERE IS LONDON CITY ISLAND?

- LONDON CITY ISLAND IS JUST TWO STOPS FROM CANARY WHARF, EXCELLENT FOR COMMUTERS
- WELL CONNECTED THROUGH THE JUBILEE LINE AND DLR, LONDON BRIDGE IS 10 MINUTES AWAY
- WATERLOO IS 13 MINUTES AWAY



# LONDON CITY ISLAND & GOODLUCK HOPE

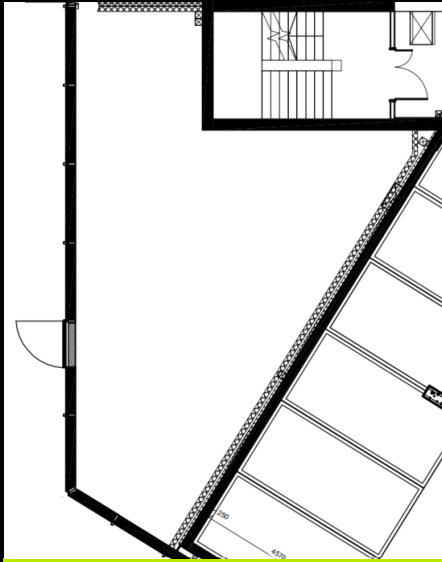
## KEY FACTS

- 2,457 NEW HOMES
- WHEN COMPLETE, POPULATION C5000
- HOME TO ENGLISH NATIONAL BALLET
- NEWHAM COLLEGE, QUEEN MARY UNIVERSITY OF LONDON DUE TO OPEN
- TOTAL OF 25 RETAIL AND RESTAURANT UNITS ACROSS BOTH DEVELOPMENTS





# FLOOR PLAN & TERMS



**GROUND: 936 SQFT.**

**SUBJECT TO CONTRACT**

**LEASE: FLEXIBLE TERMS AVAILABLE**

**RENT: £23,500**

**INCENTIVES: AVAILABLE ON REQUEST**

**JOSH GAMBER**

JOSH.GAMBER@SHACKLETONPROPERTY.COM

07596 885622

**TONY MOORE**

TONY.MOORE@SHACKLETONPROPERTY.COM

07792 429660

